

## UL Approved Natural Gas Detector Fixed Combustible LPG Gas Detector

Our Product Introduction

for more products please visit us on multi-gasdetection.com

### Basic Information

- Minimum Order Quantity: 1 Piece (MOQ)
- Price: US\$150.00-800.00
- Shipping Method: LCL, AIR, FCL, Express, Negotiation
- Payment Terms: T/T, Western Union, MoneyGram, Paypal



### Product Specification

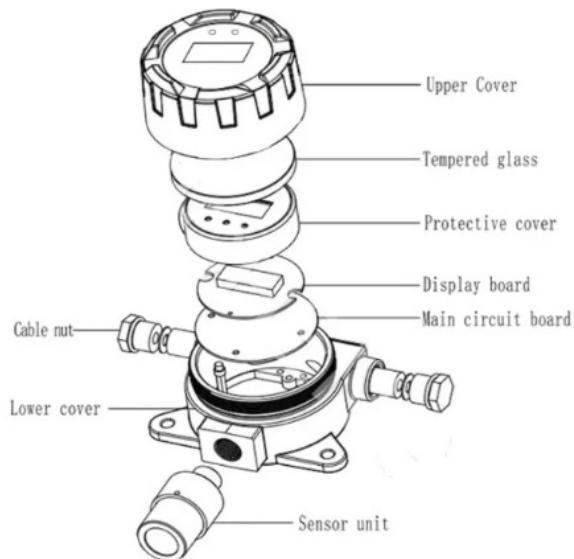
- Model NO.: K800-N
- Certification: CE
- Gas: LPG
- Voltage: DC 24V
- Output Singal: 4-20mA
- Display: 4 Digital LED Readout Diaplay
- Explosion-Proof Grade: Exd IIct6
- HS Code: 8531100000
- Highlight: **UL Approved Fixed Combustible Gas Detector, Fixed Combustible LPG Gas Detector**



### More Images



## Product Description

**K800 Fixed Gas Detector**

K800 Series Fixed Gas detector provides comprehensive monitoring of combustible, toxic gas hazards in potentially explosive atmospheres, indoors and outdoors are marked by installation ease and flexibility, user-friendly operation and cost-effective gas monitoring.

**>>>Key Features:**

- 1) Providing digital LCD displayer, alarm facility with sound and light, and solid relay output on the spot, allowing control the equipments easily.
- 2) Supporting 4 to 20mA analog signal output (DC24V), connecting with the remote host controller, and having direct access to the DCS.
- 3) Connecting 3 - core shield cable, 3x1.0mm.
- 4) Special transmitter mounting kit making the installation and performing calibration easier and better.
- 5) Ambient temperature: -20°C~50°C
- 6) Explosion-proof grade: Ex d IIC T6
- 7) High sensitivity, short response time and good stabilization

**Certificate: (CE &UL)**

CE Certificate



UL Certificate



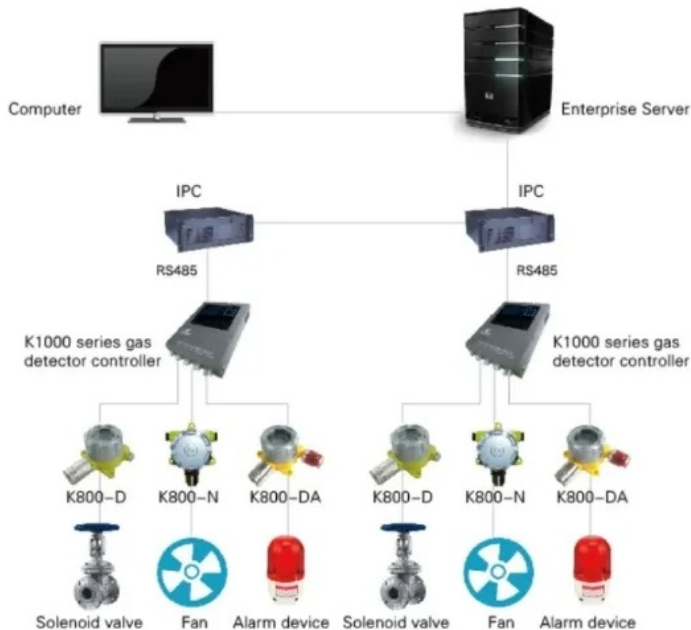
UL Certificate

**>>>Technical Specification:**

Power supply	DC 24V
Output signal	4-20mA standard industrial signal output
Operating temperature	-40 to +70 ( electronics, see table for detection cells )
Display	Backlight LED
Relative humidity	15%~90% RH (non-condensing)
Atmospheric pressure	86~106Kpa
Explosion-proof grade	Ex d IIC T6

Protection number	IP 66
Warranty	1 year
Device	Aluminium enclosure and stainless steel 304L for sensor housing

#### Detection system draft and detector working principle:



#### COMMONLY USED GAS DETECTION LIST

NO	Detection gas	Range	Accuracy	90% response time	Min readout	Low/High alarm
1	PH3	0-5ppm	±5%(F.S)	≤25s	0.01 ppm	0.3/5ppm
2	O2	0-30%	±5%(F.S)	≤15s	0.1%vol	18.0%/23.0%
3	LPG(LEL gas)	0-100%LEL	±5%(F.S)	≤5s	1%LEL	25.0%/50.0%LEL
4	CO	0-1000 ppm	±5%(F.S)	≤25s	1 ppm	50ppm/100ppm
5	H2S	0-100 ppm	±5%(F.S)	≤30s	1 ppm	10ppm/20ppm
6	CH4	0-100%LEL	±5%(F.S)	≤5s	1%LEL	25.0%/50.0%LEL
7	NH3	0-100ppm	±5%(F.S)	≤50s	1 ppm	25 ppm /50 ppm
8	O3	0-20ppm	±5%(F.S)	≤60s	0.01ppm	0.2ppm/0.4ppm
9	Cl2	0-20 ppm	±5%(F.S)	≤30s	0.1 ppm	1 ppm /10 ppm
10	H2	0-1000 ppm	±5%(F.S)	≤60s	1 ppm	50 ppm /100 ppm
11	SO2	0-100 ppm	±5%(F.S)	≤30s	0.1 ppm	2 ppm /10 ppm
12	NO	0-250 ppm	±5%(F.S)	≤60s	1 ppm	25ppm/50 ppm
13	NO2	0-20 ppm	±5%(F.S)	≤25s	0.1 ppm	3ppm/10ppm
14	Infrared CO2	0-5%vol	±5%(F.S)	≤60s	0.1%vol	1%vol/2%vol
15	Infrared CH4	0-5%vol	±5%(F.S)	≤60s	0.1%vol	0.1%vol/0.15%vol
16	Infrared C3H8	0-5%vol	±5%(F.S)	≤60s	0.1%vol	0.1%vol/0.15%vol

#### Imported Sensors:

Honeywell & Alphasense & CITY



**>>>Packing:**



**>>>Company Information:**





## COMPANY APPEARANCE

## THE OFFICE MEETING



## WORKSHOP INSTRUMENT



- ◆ Nanjing Kelisaike Safety Equipment Co., Ltd. founded in 2004, Nanjing Kelisaike has three subsidiaries in Beijing, Xi'an and Xinjiang province, and over 30 domestic sales service centers.
- ◆ Standard products include the K60 series portable single gas detectors, K60-IV series multi gas detectors, K800 series fixed gas transmitters, K500 series wall-mounted gas detectors, K1000 series gas detector control panel units, KL99 series air breathing apparatuses, etc.
- ◆ Nanjing Kelisaike is also a factory with rich experience in OEM service, providing professional design and manufacturing of customized products.

### >>>Company Profile



### >>>Product Catalogue:



**K60**  
K60



**K60-V**  
K60-A



**K800**  
K800



**K500**  
K200



**KL99**  
K100



**K1000**  
K1000



**KF200**  
K200



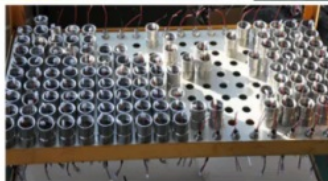
**KF300**  
K200

### >>>Workshop:



### THE WORKSHOP

Nanjing KELISAIKE has passed ISO9001 International Quality System Certification, which ensures all products' excellent performance and competitive prices.



### >>>Package and Delivery:



**Firmly Packing**  
Non fumigation wooden case

→ **Loading and transportation**

→ **Arrived**



### >>>Our Exhibition:





### >>>Product Application Show:



◆ The company's products are widely used in fields of petroleum, chemical, gas transmission and distribution, warehousing, municipal gas supply, fire fighting, environmental protection, metallurgy, pharmacy, energy and power industry.

### >>> Our Services

- 1.For all our customers, our products have 1 year warranty, and life-long maintenance.
- 2.All inquiries will be replied in 24 hours.
- 3.Providing technical support, professional engineers are specialized in dealing with gas monitoring problems you met.
4. OEM and ODM service are welcome.
- 5.KELISAIKE plant is located in Nanjing, only 1 hour by high speedtrain from Shanghai. Welcome to visit the factory.
- 6.All products are well tested and packed before shipment; the certificate of inspection will be provided.

### >>>Calibration:

Do you know how to calibrate your portable gas detectors?

Please contact us to ask for help.

### >>>Why choose KELISAIKE:

1. Mutual benefit : We are a factory. The price is much more competitive than others in the same quality.
2. Professional engineers: With 10+ years history, KELISAIKE has a professional engineering team: 4 engineers who have more than 10 years' experience and over 5 engineer assistants in gas detection line, with Hi-Tech manufacturing equipments, we make more accurate and stable products.
3. Customize : We have strong R&D team, the custom product as your request are available.
4. Free OEM service : (a) Silk-printing your Logo( $\geq 100$ PCS). (b) Design your color box( $\geq 500$ PCS).
5. Mix order : We accept mix order, different model and small quantity order.
6. After service: (a) 1 Year warranty. (b) If there's any inferior-quality products are found, new ones could be sent to replace at free cost in the next order after confirmation.

## >>> FAQ

### **Q: Are you a manufacturer?**

A: Sure. We are the professional safety equipment manufacturer and have the experience of produce and market over 12 years in this field.

### **Q: Are you provide customization?**

A: Of course. It includes gas type, gas detection range, gas alarm point etc. Please contact us about the detailed specifications.

### **Q: Could I order one piece sample for the quality test? And do you charge for the samples?**

A: Sure. We recommend to check the sample before order.  
According to our company policy, we just charge the samples based on EXW price.

### **Q: If I order big quantity, what's the good price?**

A: Please send the details enquiry to us, such as the Item Number, Quantity for each item, Quality request, Logo, Payment Terms, Transport method, Discharge place etc. We will make the accurate quotation to you as soon as possible.

### **Q:How about the Delivery time?**

A: Samples will be prepared within 15 Days after 100% T/T in advance payment. QTY order will be delivered in 30 days.

### **Q:What kind of payments does KELISAIKE support?**

A: T/T, L/C, Western Union, Cash all are accepted.

### **Q:What's the MOQ?**

A:The MOQ is 1 PC. Please never mind the quantity.

### **Q: May I have your catalogue and price list for trial order in MOQ quantity?**

A: All our products were shown on Made in China, please have a detailed looking and choose the interested models in our site. Or you can send email to us.



**Nanjing Kelisaike Safety Equipment Co., Ltd.**



+86 25 8719 3262



manager@njklsk.cn



multi-gasdetection.com

Bldg 12, 2 Qingshuiting West Road, Nanjing, Jiangsu, China, 211102