

## 4-20MA Fixed NH3 Gas Detector Transmitter EX H2S CO O2 Methane Gas Detector Gas Leak Detector

Our Product Introduction

for more products please visit us on multi-gasdetection.com

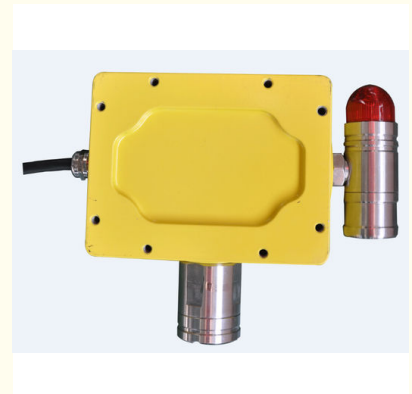
### Basic Information

- Minimum Order Quantity: 1 Piece (MOQ)
- Price: US\$320.00-360.00
- Shipping Method: LCL, AIR, FCL, Express, Negotiation
- Payment Terms: T/T, Western Union, MoneyGram, Paypal



### Product Specification

- Model NO.: K500
- Certification: CE
- Gas: CO
- Voltage: DC 24V
- Alarm: Sound And Light Synchronization Alarm
- Explosion-Proof Grade: Exd IICt6
- Outer Case Material: Aluminium Alloy And Stainless Steel
- HS Code: 8531100000
- Highlight: 20mA Wall Mount Alarm System,  
Wall Mount Alarm System,  
Carbon Monoxide Wall Mount Alarm System



### More Images





◆ K500 series wall mount gas detector is a device with long service life, adopting high sensitivity imported sensors and the explosion proof design. The wall mount gas detector operates as part of an integrated system (with 4-20mA output analog) or as a stand-alone system only. 2 discrete alarm levels(high level & low level), audible and visual alarm.

#### >>>Key Features:

1. High sensitivity world famous imported sensors
2. Bright, red flashing visible alarm and loud 90dB audible alarm on the spot
3. Waterproof and dustproof design for normal and continuous working in harsh environment
4. Compatible with DCS(Distributed Control System)
5. Flameproof body design acc.to ICE61508, simple and easy installation and maintenance
6. Programmable alarm operation value, low or high level alarm indication
7. 220V AC or 24V DC power supply, 4-20mA output analog, three core shield cable, DCS system
8. CERTIFICATIONS: CMC, EX, MA

#### >>>Technical Specification:

<b>Power supply</b>	24VDC or AC 220V/50Hz
<b>Output signal</b>	4-20mA standard industrial signal output
<b>Operating temperature</b>	-20°C~+50°C
<b>Relative humidity</b>	15%~90% RH (non-condensing)
<b>Display</b>	Backlight LED
<b>Backlight LED display</b>	4-digit gas reading
<b>Atmospheric pressure</b>	86~106Kpa
<b>Explosion-proof grade</b>	Exibd IIC T6
<b>Size</b>	16cm x 12.6cm x 7.8cm
<b>Weight</b>	3.5kg
<b>Distance</b>	1000m
<b>Connecting cable</b>	3 core cable, 3 x1.0mm

## COMMONLY USED GAS DETECTION LIST

Gas Type	Detection Method	Detection Range	Operating temperature	Resolution	T90 Response Time
O <sub>2</sub>	Electrochem	0-25%vol/30%vol	-30 ~+60	0.1%vol	T90≤20s
CO	Electrochem	0-100ppm/500ppm/2000ppm	-30 ~+60	0.1ppm	T90≤20s
H <sub>2</sub> S	Electrochem	0-100ppm/200ppm/1000ppm	-30 ~+60	0.1ppm	T90≤30s
NO <sub>2</sub>	Electrochem	0-10ppm/30ppm/100ppm	-30 ~+60	0.1ppm	T90≤30s
NO	Electrochem	0-100ppm/200ppm/1000ppm	-30 ~+60	0.1ppm	T90≤50s
CL <sub>2</sub>	Electrochem	0-20ppm	-30 ~+60	0.1ppm	T90≤30s
H <sub>2</sub>	Electrochem	0-2000ppm/4%vol	-30 ~+60	0.1ppm	T90≤30s
SO <sub>2</sub>	Electrochem	0-200ppm	-30 ~+60	0.1ppm	T90≤30s
CL <sub>2</sub>	Electrochem	0-20ppm	-30 ~+60	0.1ppm	T90≤30s
HCL	Electrochem	0-30ppm/200ppm	-30 ~+60	0.1ppm	T90≤30s
HCN	Electrochem	0-10ppm/200ppm	-30 ~+60	0.1ppm	T90≤30s
NH <sub>3</sub>	Electrochem	0-100ppm/500ppm/1000ppm	-30 ~+60	0.1ppm	T90≤25s
O <sub>3</sub>	Electrochem	0-1ppm/10ppm	-30 ~+60	0.1ppm	T90≤30s
PH <sub>3</sub>	Electrochem	0-5ppm/10ppm	-30 ~+60	0.1ppm	T90≤30s
CLO <sub>2</sub>	Electrochem	0-3ppm	-30 ~+60	0.1ppm	T90≤50s
H <sub>2</sub>	Catalytic	100%lel	-40 ~+60	1%lel	T90≤20s
CH <sub>4</sub> (CA)	Catalytic	0-100%lel	-40 ~+60	1%lel	T90≤20s
CH <sub>4</sub> (IR)	IR	0-5%vol/100%vol	-40 ~+60	0.1%vol	T90≤20s
VOCs	PID	0-50ppm/200ppm/1000ppm/5000ppm	-40 ~+60	0.1ppm	T90≤20s
CO <sub>2</sub> (IR)	IR	0-5%vol/100%vol	-40 ~+60	0.01%vol	T90≤20s
C <sub>3</sub> H <sub>8</sub> (IR)	IR	0-2%vol/100%vol	-40 ~+60	0.01%vol	T90≤20s
C <sub>x</sub> H <sub>y</sub> (IR)	IR	0-100%lel	-40 ~+60	1%lel	T90≤20s
SF <sub>6</sub> (IR)	IR	0-1000ppm/2000ppm	-40 ~+60	1ppm	T90≤20s

### Imported Sensors:

Honeywell & Alphasense & CITY



>>>Packing:



### >>>Company Information:



COMPANY  
APPEARANCE

THE OFFICE  
MEETING



WORKSHOP  
INSTRUMENT



◆ Nanjing Kelisaike Safety Equipment Co., Ltd. founded in 2004, Nanjing Kelisaike has three subsidiaries

in Beijing, Xi'an and Xinjiang province, and over 30 domestic sales service centers.

◆ Standard products include the K60 series portable single gas detectors, K60-IV series multi gas detectors, K800 series fixed gas transmitters, K500 series wall-mounted gas detectors, K1000 series gas detector control panel units, KL99 series air breathing apparatuses, etc.

◆ Nanjing Kelisaike is also a factory with rich experience in OEM service, providing professional design and manufacturing of customized products.



## >>>Company Profile



## >>>Product Catalogue:



## >>>Related Certificates:



## >>>Workshop:



## THE WORKSHOP

Nanjing KELISAIKE has passed ISO9001 International Quality System Certification, which ensures all products' excellent performance and competitive prices.



## >>>Package and Delivery:



Firmly Packing

Non fumigation wooden case

→ Loading and transportation

→ Arrived



## >>>Our Exhibition:



## >>>Product Application Show:





◆ The company's products are widely used in fields of petroleum, chemical, gas transmission and distribution, warehousing, municipal gas supply, fire fighting, environmental protection, metallurgy, pharmacy, energy and power industry.

### >>> **Our Services**

1. For all our customers, our products have 1 year warranty, and life-long maintenance.
2. All inquiries will be replied in 24 hours.
3. Providing technical support, professional engineers are specialized in dealing with gas monitoring problems you met.
4. OEM and ODM service are welcome.
5. KELISAIKE plant is located in Nanjing, only 1 hour by high speedtrain from Shanghai. Welcome to visit the factory.
6. All products are well tested and packed before shipment; the certificate of inspection will be provided.

### >>> **Calibration:**

Do you know how to calibrate your portable gas detectors?

Please contact us to ask for help.

### >>> **Why choose KELISAIKE:**

1. Mutual benefit : We are a factory. The price is much more competitive than others in the same quality.
2. Professional engineers: With 10+ years history, KELISAIKE has a professional engineering team: 4 engineers who have more than 10 years' experience and over 5 engineer assistants in gas detection line, with Hi-Tech manufacturing equipments, we make more accurate and stable products.
3. Customize : We have strong R&D team, the custom product as your request are available.
4. Free OEM service : (a) Silk-printing your Logo(≥100PCS). (b) Design your color box(≥500PCS).
5. Mix order : We accept mix order, different model and small quantity order.
6. After service: (a) 1 Year warranty. (b) If there's any inferior-quality products are found, new ones could be sent to replace at free cost in the next order after confirmation.

### >>> **FAQ**

#### **Q: Are you a manufacturer?**

A: Sure. We are the professional safety equipment manufacturer and have the experience of produce and market over 12 years in this field.

#### **Q: Are you provide customization?**

A: Of course. It includes gas type, gas detection range, gas alarm point etc. Please contact us about the detailed specifications.

#### **Q: Could I order one piece sample for the quality test? And do you charge for the samples?**

A: Sure. We recommend to check the sample before order.  
According to our company policy, we just charge the samples based on EXW price.

#### **Q: If I order big quantity, what's the good price?**

A: Please send the details enquiry to us, such as the Item Number, Quantity for each item, Quality request, Logo, Payment Terms, Transport method, Discharge place etc. We will make the accurate quotation to you as soon as possible.

#### **Q: How about the Delivery time?**

A: Samples will be prepared within 15 Days after 100% T/T in advance payment. QTY order will be delivered in 30 days.

**Q:What kind of payments does KELISAIKE support?**

A: T/T, L/C, Western Union, Cash all are accepted.

**Q:What's the MOQ?**

A:The MOQ is 1 PC. Please never mind the quantity.

**Q: May I have your catalogue and price list for trial order in MOQ quantity?**

A: All our products were shown on Made in China, please have a detailed looking and choose the interested models in our site. Or you can send email to us.



**Nanjing Kelisaike Safety Equipment Co., Ltd.**



+86 25 8719 3262



manager@njklsk.cn



multi-gasdetection.com

Bldg 12, 2 Qingshuiting West Road, Nanjing, Jiangsu, China, 211102