

## Industrial Fixed Gas Detector LED Display 4-20mA Fixed H2s Gas Leak Detector

Our Product Introduction

for more products please visit us on [multi-gasdetection.com](http://multi-gasdetection.com)

### Basic Information

- Minimum Order Quantity: 1PC
- Price: US\$240.00-1,000.00
- Stock: 1PC
- Shipping Method: LCL, AIR, FCL, Express
- Payment Terms: T/T, Western Union, MoneyGram, Paypal



### Product Specification

- Model NO.: K800-D
- Certification: CE
- Gas: H2S
- Detection Range: 0-100ppm
- Low Alarm: 10ppm
- High Alarm: 20ppm
- Signal Output: 4 To 20mA
- Voltage: DC 24V
- Alarm Type: Vibration Alarm With Light, Sound
- Explosion-Proof Grade: Exd Ict6
- Operating Temperature: -20 ~+50
- Weight: 1.8kg
- HS Code: 8531100000
- Warranty: 1 Year
- Highlight: 20mA Fixed H2s Gas Detector,



### More Images



## Industrial Fixed Gas Detector LED Display 4-20mA Fixed H2s Gas Detector



The **K800 Series Fixed Gas Detector** provides comprehensive monitoring of combustible, toxic gas hazards in potentially explosive atmospheres, indoors and outdoors-and is marked by installation ease and flexibility, user-friendly operation and cost-effective gas monitoring.

### >>>Key Features

- 1) Providing digital LCD displayer, alarm facility with sound and light, and solid relay output on the spot, allowing control the equipments easily.
- 2) Supporting 4 to 20mA analog signal output (DC24V), connecting with the remote host controller, and having direct access to the DCS.
- 3) Connecting 3 - core shield cable, 3x1.0mm.
- 4) Special transmitter mounting kit making the installation and performing calibration easier and better.
- 5) Ambient temperature: -20°C~+50°C
- 6) Explosion-proof grade: ExdIICT6
- 7) High sensitivity, short response time and good stabilization

### Detailed types of the K800 series Fixed Gas Detector:

K800-[gas type]-[mount pattern]

N: with non-display

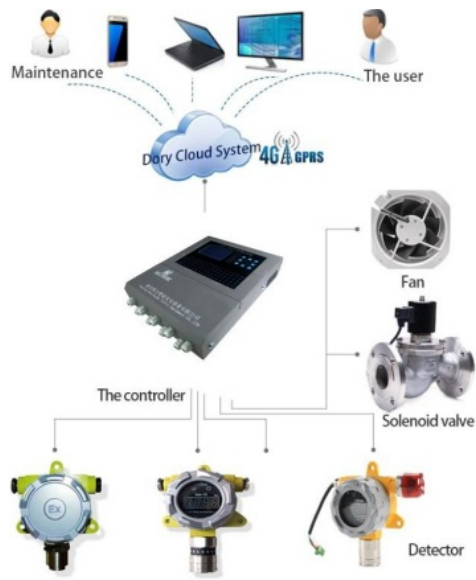
D: with LED display

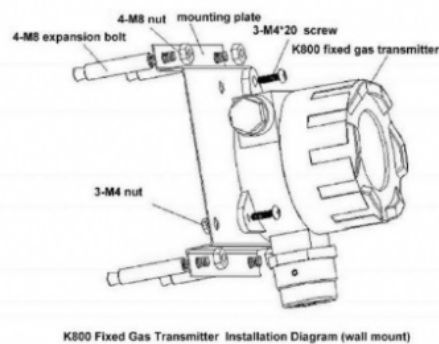
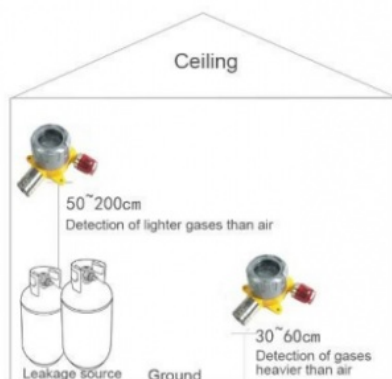
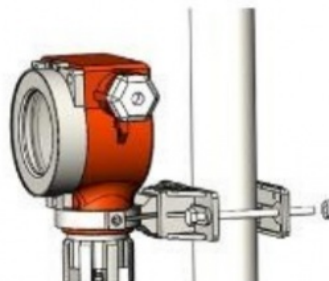
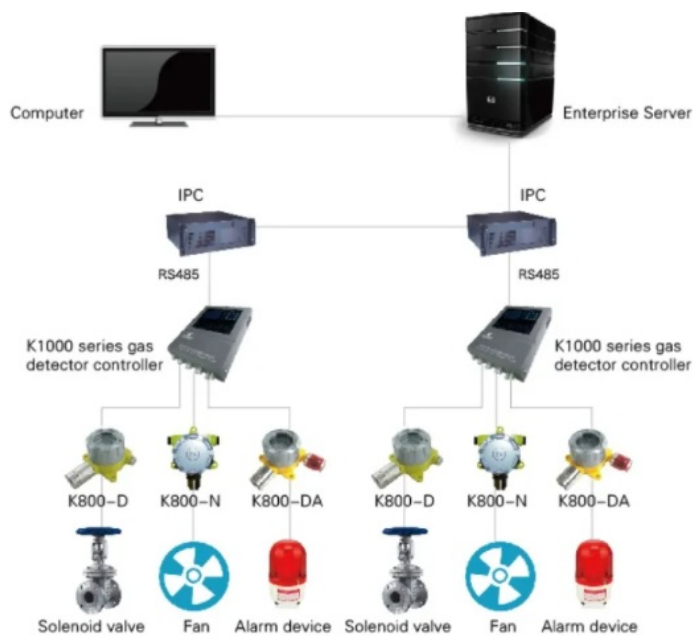
DA: alarm with light and sound

## >>>Parameter:

Item:	K800 Fixed gas detector
Sensor Cell:	UK sensors (brand CITY, Alphasense, Dynament etc.), US (brand Honeywell), Japan and Germany sensors
Lifetime of Detector:	2 - 5 years
Sample Mode	Diffusion
Output Signals:	<b>4-20mA&amp;RS485</b>
Operating Voltage:	24V DC
Response Time	T90≤30S
Suitable Cable	RVVP3*1.5mm2 cable
Wiring	3-wire/4-wire
Relay Output	1 relay output
Operation Method	with remote control
Ingress Protection	IP66
Body Material	YL113 aluminum +304L S/S
Display	4 digital LED readout display (LCD display with power, fault,alarm-1,alarm-2 indicator light)
Transmission Cable	Three core shield cable, 3×1.5mm
Ambient Temperature:	- 20 ° C ~ + 50 ° C
Relative Humidity:	10~90%RH(non condensation)
Working Pressure:	86~106Kpa
Detection Precision:	±5%FS
Net Weight:	K800-N: 1.6kg K800-DA:2 kg
Dimension(mm):	183×143×107mm
Certificates	EN 61326-1:2013; EX (Exd IICT6 Gb;Ex tD A21IP66T80°C); SIL(SIL2); UL 508 UL1203
Explosion-proof Grade:	Exd II CT6
Protection Grade:	IP65

## Diagram and Working Principle of Detection System





The detector working with gas controller are widely used to detect gas in refinery, chemical plant, LPG station, boiler room, painting plant and other places with gas exists, effectively protect personnel and plant from flammable, toxic and oxygen hazards.

### >>>Imported Sensors: Honeywell & Alphasense & CITY



## >>>Certificates:



CE Certificate



UL Certificate



UL Certificate

## >>>Package:



## >>>COMMONLY USED GAS DETECTION LIST :

No.	Detection gas	Range	Accuracy	90% response time	Min readout	Low/high alarm
1	PH <sub>3</sub>	0-5ppm	±5%(F.S)	≤25s	0.01ppm	0.3ppm/5ppm
2	O <sub>2</sub>	0-30%vol	±5%(F.S)	≤15s	0.1%vol	18%vol/23%vol
3	EX(LEL/C H <sub>4</sub> )	0-100%lel	±5%(F.S)	≤15s	1%lel	25%lel/50%lel
4	CO	0-2000 ppm	±5%(F.S)	≤25s	1 ppm	50ppm/100ppm
5	H <sub>2</sub> S	0-100 ppm	±5%(F.S)	≤30s	1 ppm	10ppm/20ppm
6	NO <sub>2</sub>	0-20 ppm	±5%(F.S)	≤25s	0.1 ppm	3ppm/10ppm
7	NO	0-250 ppm	±5%(F.S)	≤60s	1 ppm	25ppm/50 ppm
8	SO <sub>2</sub>	0-100 ppm	±5%(F.S)	≤30s	0.1 ppm	2 ppm /10 ppm
9	CL <sub>2</sub>	0-20 ppm	±5%(F.S)	≤30s	0.1 ppm	1 ppm /10 ppm
10	NH <sub>3</sub>	0-200ppm	±5%(F.S)	≤50s	1 ppm	25 ppm /50 ppm
11	H <sub>2</sub>	0-1000 ppm	±5%(F.S)	≤60s	1 ppm	50 ppm /100 ppm
12	HCN	0-50ppm	±5%(F.S)	≤200s	0.1ppm	10ppm/20ppm
13	HCL	0-20ppm	±5%(F.S)	≤60s	0.1ppm	5ppm/10ppm
14	CH <sub>4</sub> (IR)	0-5%vol	±5%(F.S)	≤60s	0.01%vol	customized
15	CO <sub>2</sub> (IR)	0-5%vol (0-5000ppm)	±5%(F.S)	≤60s	0.1%vol (1ppm)	customized
16	PID(VOCs)	1-1999ppm	±5%(F.S)	≤20	0.1ppm	customized
17	C <sub>3</sub> H <sub>8</sub>	0-5%vol	±5%(F.S)	≤60s	0.01%vol	customized
18	O <sub>3</sub>	0-10ppm	±5%(F.S)	≤30s	0.02ppm	1ppm/2ppm





## COMPANY APPEARANCE

## THE OFFICE MEETING



## WORKSHOP INSTRUMENT



- Nanjing Kelisaik Safety Equipment Co., Ltd. founded in 2004, Nanjing Kelisaik has three subsidiaries in Beijing, Xi'an and Xinjiang province, and over 30 domestic sales service centers.
- Standard products include the K60 series portable single gas detectors, K60-IV series multi gas detectors, K800 series fixed gas transmitters, K500 series wall-mounted gas detectors, K1000 series gas detector control panel units, KL99 series air breathing apparatuses, etc.
- Nanjing Kelisaik is also a factory with rich experience in OEM service, providing professional design and manufacturing of customized products.

## >> Our Exhibition





- The company's products are widely used in fields of petroleum, chemical, gas transmission and distribution, warehousing, municipal gas supply, fire fighting, environmental protection, metallurgy, pharmacy, energy and power industry.

### >>>Why Choose Us:

1. Mutual benefit :We are a factory. The price is much more competitive than others in the same quality.
2. Professional engineers: With 20+ years history, KELISAIKE has a professional engineering team: 4 engineers who have more than 20 years' experience and over 5 engineer assistants in gas detection line, with Hi-Tech manufacturing equipments, we make more accurate and stable products.
3. Customize : We have strong R&D team, the custom product as your request are available.
4. Free OEM service : (a) Silk-printing your Logo(z100PCS). (b) Design your color box(z500PCS).
5. Mix order: We accept mix order, different model and small quantity order.
6. After service: (a) 1 Year warranty. (b) If there's any inferior-quality products are found, new ones could be sent to replace at free cost in the next order after confirmation.

### >>>Our Service:

1. For all our customers, our products have 1 year warranty, and life-long maintenance.
2. All inquiries will be replied in 24 hours.
3. Providing technical support, professional engineers are specialized in dealing with gas monitoring problems you met.
4. OEM and ODM service are welcome.
5. KELISAIKE plant is located in Nanjing, only 1 hour by high speed train from Shanghai. Welcome to visit the factory.
6. All products are well tested and packed before shipment; the certificate of inspection will be provided.

### >>>FAQ:

Q: Can I order one piece for sample to test the quality?

A: Yes, We recommend to check the sample before place an qty order.

Q: May I have your catalogue and price list for trial order in MOQ quantity?

A: All our products were shown on -line, please have a detailed looking and choose the interested models in our site. Or you can send email to us.

Q: If I order big quantity, what's the good price?

A: Please send the details enquiry to us, such as the Item Number, Quantity for each item, Quality request, Logo, Payment Terms, Transport method, Discharge place etc. We will make the accurate quotation to you as soon as possible.



**Nanjing Kelisaike Safety Equipment Co., Ltd.**



+86 25 8719 3262



manager@njklsk.cn



multi-gasdetection.com

Bldg 12, 2 Qingshuiting West Road, Nanjing, Jiangsu, China, 211102