

KF-200 in-Situ Non-Sampling Laser Gas Analyzer

Our Product Introduction

for more products please visit us on multi-gasdetection.com

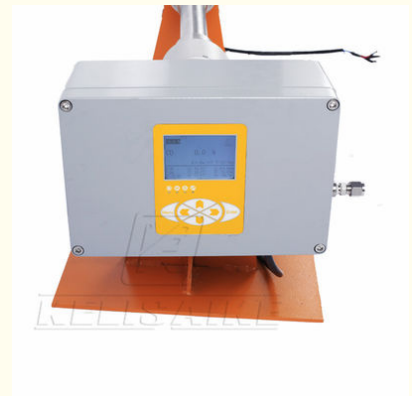
Basic Information

- Minimum Order Quantity: 1PC
- Price: US\$7,999.00 - 70,000.00
- Stock: 1PC
- Shipping Method: LCL, AIR, FCL, Express
- Payment Terms: L/C, D/A, D/P, T/T, Western Union, MoneyGram



Product Specification

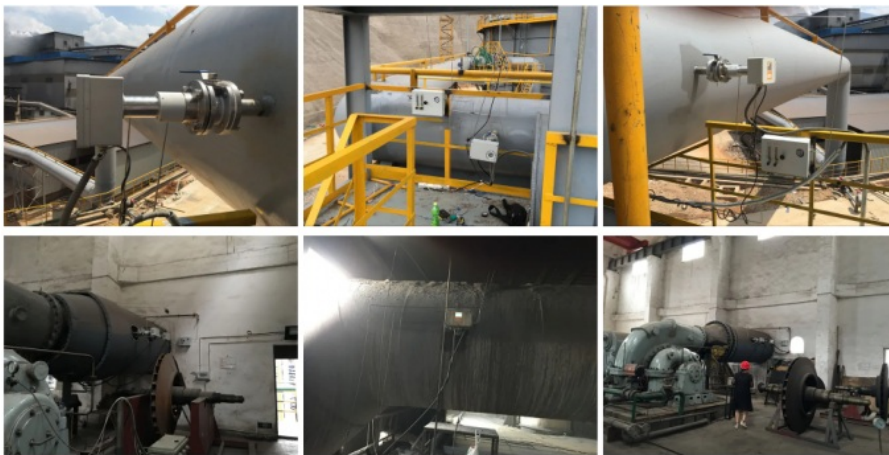
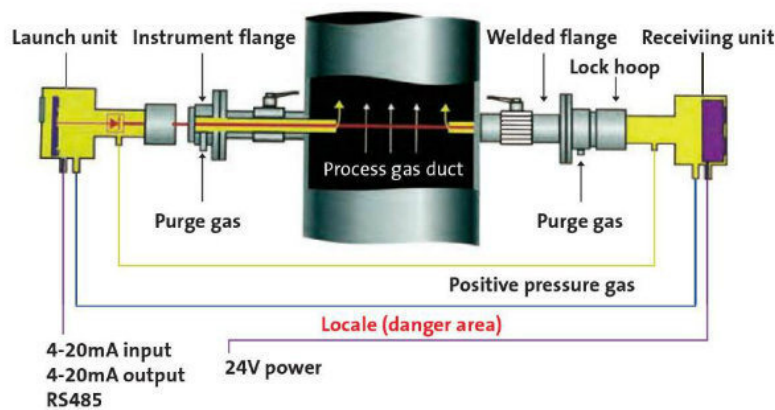
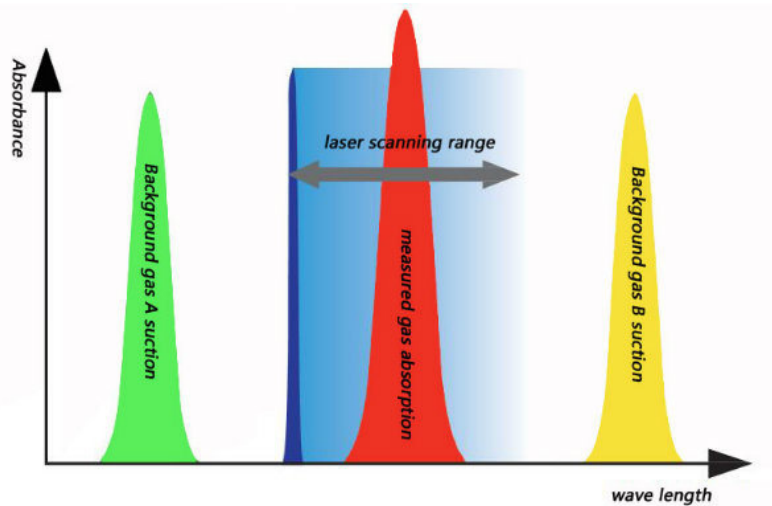
- Model NO.: KF200
- Type: Laser Gas Analyzer
- Certification: CE
- Measurement Principle: Semiconductor Laser Absorption Spectroscopy
- Power Supply: 24VDC(18~36VDC)/220V AC
- Explosion-Proof: Exp Xmd lic T5
- EMC: IEC 61000-4-2, IEC 61000-4-3, IEC 61000-4-4
- Trademark: KELISAIKE Or OEM
- HS Code: 9027100090
- Origin: Nanjing, China
- Highlight: in-situ laser gas analyzer, non-sampling gas analyzer, KF-200 laser gas analyzer



More Images



Product Description



>>>Key Features

1. In-situ probe mounting, real-time monitoring
2. Explosion-proof design, building block design, field replacement of Laser module
3. Using magnetic pen control, convenient operation

>>>Technical Features

1. Adopting the TDLAS technology, the in-situ online gas analyzing
2. Double proof probe design, without positive pressure purge, no additional data processing unit, simple compact structure, high reliability
3. Using high-power lasers, no fiber coupling, anti-harsh working conditions (such as excessive dust condition)
4. Using patented technology of spot light path adjustment, easy for on-site installation

>>>Technical Specifications:

Measurement Principle	Tunable Laser Absorption Spectroscopy(TDLAS)	
Technical Data	linearity error	$\leq \pm 1\% \text{F.S.}$
	Span drift	$\leq \pm 1\% \text{F.S.}/6 \text{ months}$
	Repeatability	$\leq 1\%$
	Explosion-proof	ExdIICT6 Gb
	Protection levels	IP66
Response Time	Warming-up time	$\leq 15 \text{ min}$
	Response time(T90)	$\leq 1\text{s}$
Interface signals	Analogue output	2-wire 4-20mA signal input(Isolated, maximum load 750 Ω)
	Relay output	3-wire relay(24V,1A)
	Digital communications	RS485/RS232/GPRS
	Analog input	2-wire 4-20mA signal input (Temperature and pressure compensation)
Laser Safety Standards	GB 7247.1-2001 (idt IEC 60825-1:1993)	
Operating Conditions	Storage Temperature	-30 $^{\circ}\text{C}$ ~+60 $^{\circ}\text{C}$
	Ambient temperature	-40 $^{\circ}\text{C}$ ~+80 $^{\circ}\text{C}$
	EMC	IEC 61000-4-2,IEC 61000-4-3,IEC 61000-4-4,IEC 61000-4-5,IEC 61000-4-11
	Gas jet	0.3~0.8MPa Industrial nitrogen inlet and purification instrument gases etc.
	Consumption	<20W
	Power	24V DC(18-36V DC), 220V AC

>>>Gas Detection Limits:

Remark1: The test conditions for 1 m optical path, the gas pressure 1 bar, gas temperature 300k

Remark2: By increasing the optical path, proportionally lower detection limit.

NO	Detection gas	Detection limit	Detection range
1	O ₂	0.01%Vol	(0-1%)Vol., (0-100)%Vol.
2	CO ₂	10ppm	(0-1000)ppm, (0-100)%Vol.
3	H ₂ S	20ppm	(0-2000)ppm, (0-100)%Vol.
4	HCl	0.1ppm	(0-50)ppm, (0-100)%Vol.
5	NH ₃	0.1ppm	(0-10)ppm, (0-100)%Vol.
6	C ₂ H ₂	0.1ppm	(0-10)ppm, (0-100)%Vol.
7	CO ₂	10ppm	(0-1000)ppm, (0-100)%Vol.
8	H ₂ O	0.3ppm	(0-50)ppm, (0-100)%Vol.
9	HF	0.02ppm	(0-5)ppm, (0-10000)ppm
10	CH ₄	0.4ppm	(0-40)ppm, (0-100)%Vol.

11	C2H4	0.6ppm	(0-60)ppm, (0-100)%Vol.
----	------	--------	-------------------------

>>>Company Information:



**COMPANY
APPEARANCE**

**THE OFFICE
MEETING**



**WORKSHOP
INSTRUMENT**



- ◆ Nanjing Kelisaike Safety Equipment Co., Ltd. founded in 2004, Nanjing Kelisaike has three subsidiaries in Beijing, Xi'an and Xinjiang province, and over 30 domestic sales service centers.
- ◆ Standard products include the K60 series portable single gas detectors, K60-IV series multi gas detectors, K800 series fixed gas transmitters, K500 series wall-mounted gas detectors, K1000 series gas detector control panel units, KL99 series air breathing apparatuses, etc.
- ◆ Nanjing Kelisaike is also a factory with rich experience in OEM service, providing professional design and manufacturing of customized products.

>>>Product Catalogue:



K60
K60



K60-V
K60-V



K800
K800



K500
K500



KL99
KL99



K1000
K1000



KF200
KF200



KF300
KF300

>>>Package and Delivery:



>>>Exhibition:



>>> Our Services

1. For all our customers, our products have 1 year warranty, and life-long maintenance.
2. All inquiries will be replied in 24 hours.
3. Providing technical support, professional engineers are specialized in dealing with gas monitoring problems you met.
4. OEM and ODM service are welcome.
5. KELISAIKE plant is located in Nanjing, only 1 hour by high speedtrain from Shanghai. Welcome to visit the factory.
6. All products are well tested and packed before shipment; the certificate of inspection will be provided.

>>>Why choose KELISAIKE:

1. Mutual benefit : We are a factory. The price is much more competitive than others in the same quality.
2. Professional engineers: With 10+ years history, KELISAIKE has a professional engineering team: 4 engineers who have more than 10 years' experience and over 5 engineer assistants in gas detection line, with Hi-Tech manufacturing equipments, we make more accurate and stable products.
3. Customize : We have strong R&D team, the custom product as your request are available.
4. Free OEM service : (a) Silk-printing your Logo(≥ 100 PCS). (b) Design your color box(≥ 500 PCS).
5. Mix order : We accept mix order, different model and small quantity order.
6. After service: (a) 1 Year warranty. (b) If there's any inferior-quality products are found, new ones could be sent to replace at free cost in the next order after confirmation.



Nanjing Kelisaike Safety Equipment Co., Ltd.



+86 25 8719 3262



manager@njklsk.cn



multi-gasdetection.com

Bldg 12, 2 Qingshuiting West Road, Nanjing, Jiangsu, China, 211102

